

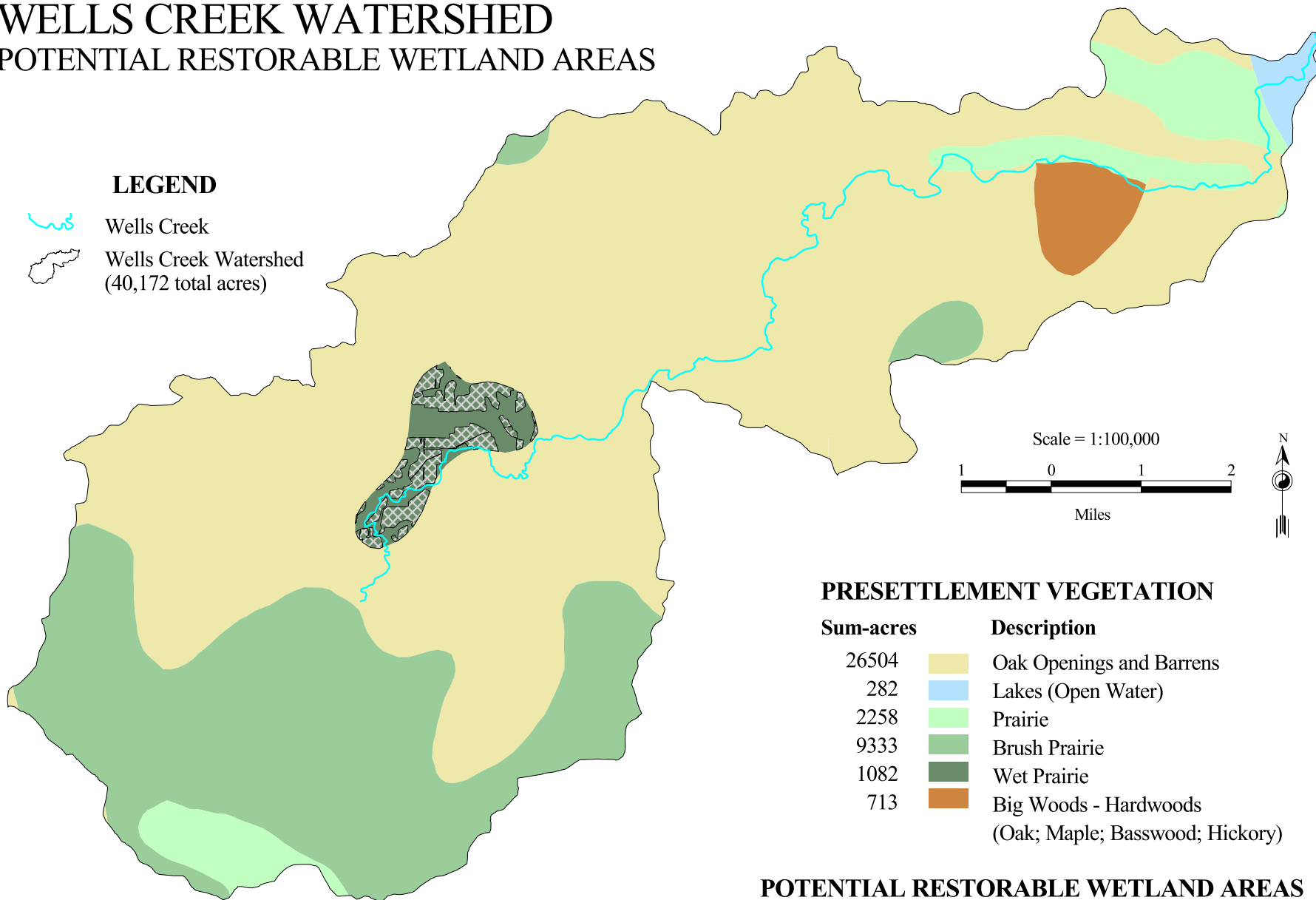


# WELLS CREEK WATERSHED


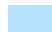
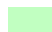



## POTENTIAL RESTORABLE WETLAND AREAS

### LEGEND


-  Wells Creek
-  Wells Creek Watershed (40,172 total acres)



### PRESETTLEMENT VEGETATION

Sum-acres	Description
26504	 Oak Openings and Barrens
282	 Lakes (Open Water)
2258	 Prairie
9333	 Brush Prairie
1082	 Wet Prairie
713	 Big Woods - Hardwoods (Oak; Maple; Basswood; Hickory)

### POTENTIAL RESTORABLE WETLAND AREAS

Sum-acres	Description
535	 Areas that are presently cultivated land, that are not enrolled in an easement/contract conservation program, and that were classified as Wet Prairie in the Original Vegetation of Minnesota, 1895, as compiled by Marshner (1930).

Prepared for: The Land Stewardship Project, Multiple Benefits of Agriculture  
 Prepared by: Cis Berg, Water Resources Center, Minnesota State University, Mankato  
 Date: June, 2001  
 Software: ARC/INFO 7.1.2 and ArcView 3.1  
 GIS Data Sources: MDNR: Presettlement Vegetation, International Coalition Land Use/  
 Land Cover, GAP Stewardship; BWSR: Easement parcels